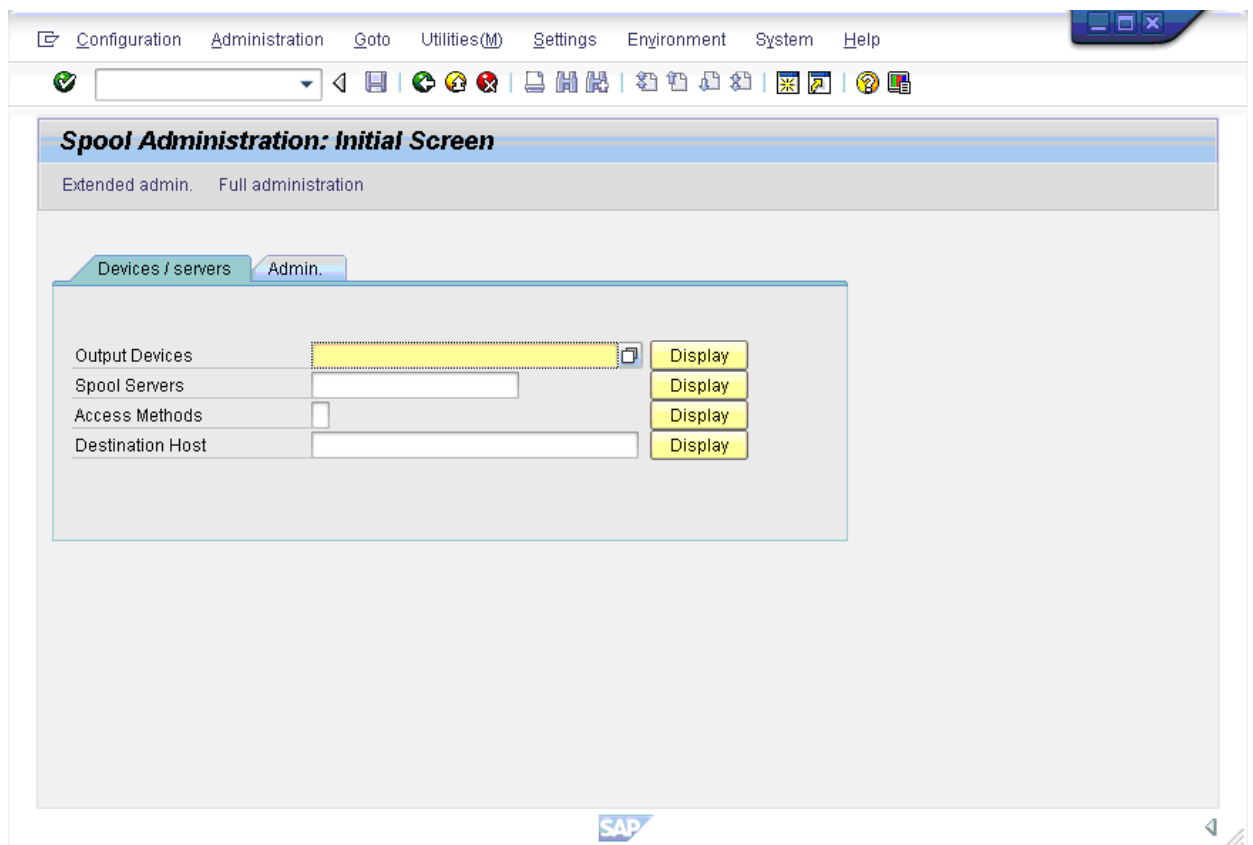


Scanguns Features

4.3.1 SAP Settings for Printing with SAPWIN Drivers

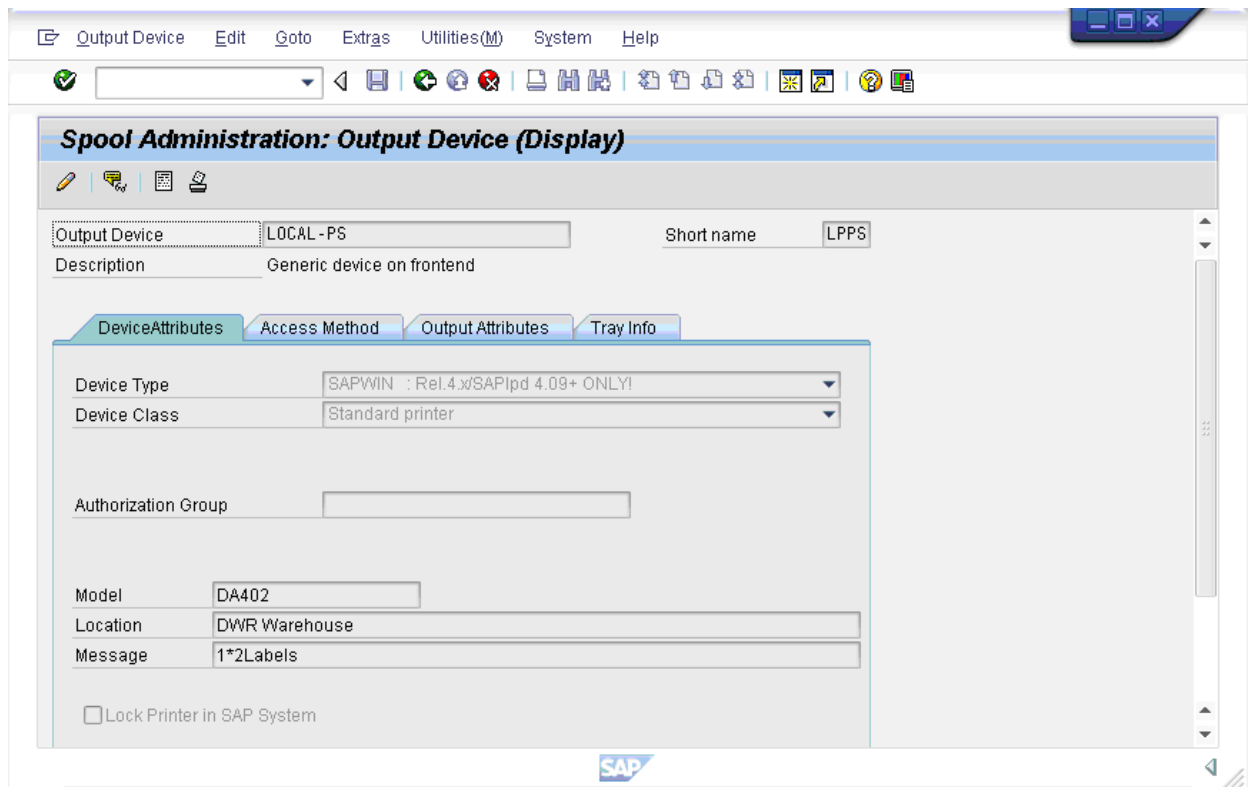
To enable Mobile printing with SAPWIN from a Liquid UI Handheld Scanguns device, please do the following:

1. Log into SAP.
2. In the Transaction field, enter the following: **/nSPAD.**
3. The following screen will appear. Click the Display button to the right of the Output Devices field.

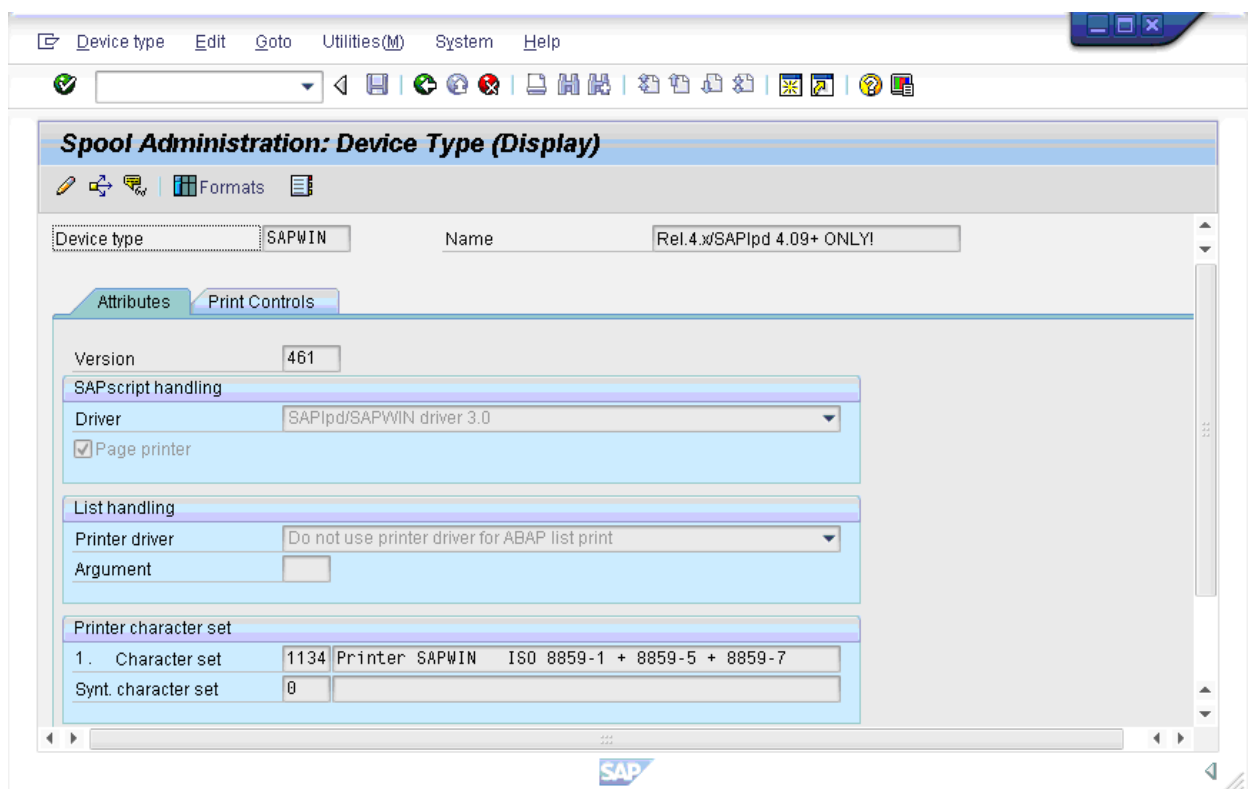


4. The following screen will display. Select the Device Attributes tab and click on the Device Type field. The Device Type should be as follows: **SAPWIN : Rel.4.x/SAPIpd 4.09+ ONLY!**

Scanguns Features

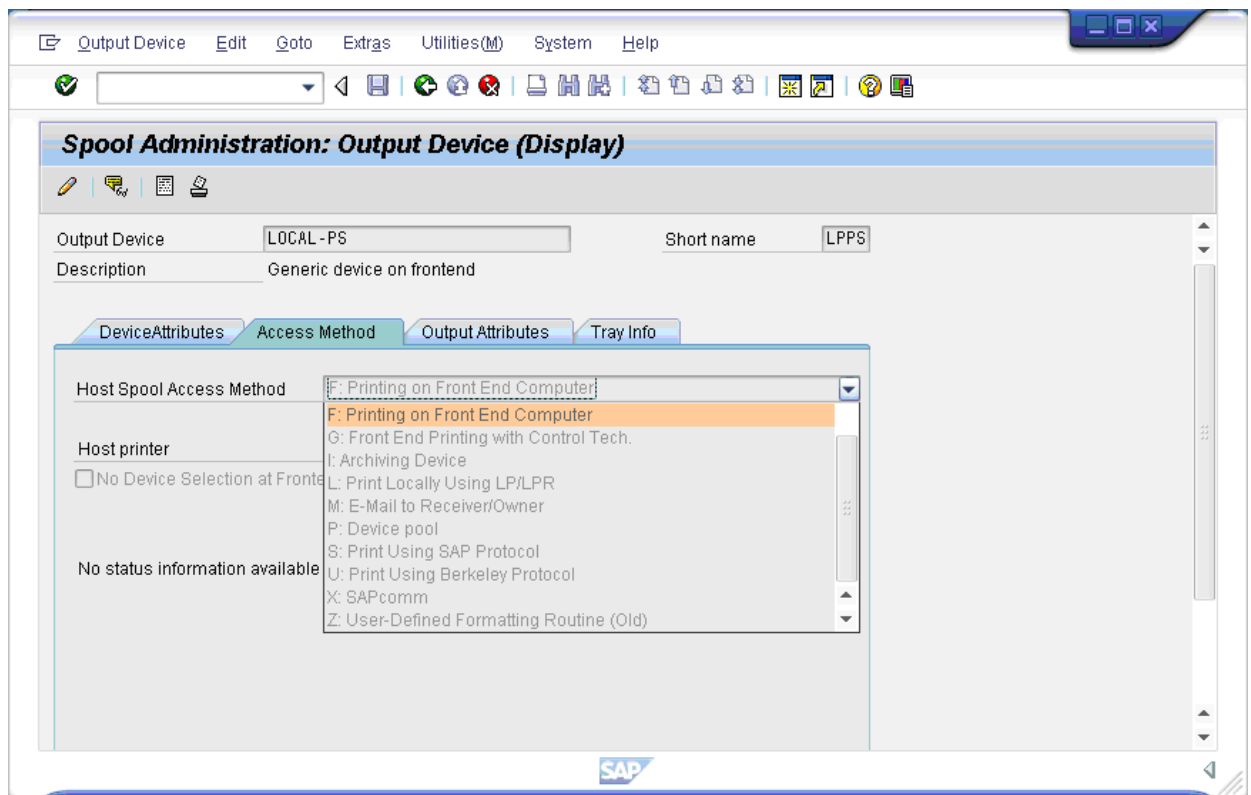


5. Right-click on the Device Type field label and select 'Choose' from the resulting list menu. The following screen will appear.



Scanguns Features

6. Ensure that the type is set to 'SAPlpd/SAPWIN driver 3.0' as shown above and return to the main SPAD screen.
7. Click the Access Method tab and select the Host Spool Access Method field to display the drop-down menu as shown below:



8. Select F: Printing on Front End Computer from the drop-down list.
Note: Only the 'F' method can be selected for printing with SAPWIN - other options will not succeed.
9. SAP is now configured to perform printing from Mobile using SAPWIN drivers.

Unique solution ID: #1480
Author: Shilpa Sahu
Last update: 2019-06-21 01:50