

Designer Features

5.02.07 Viewing SAP Groupbox Properties

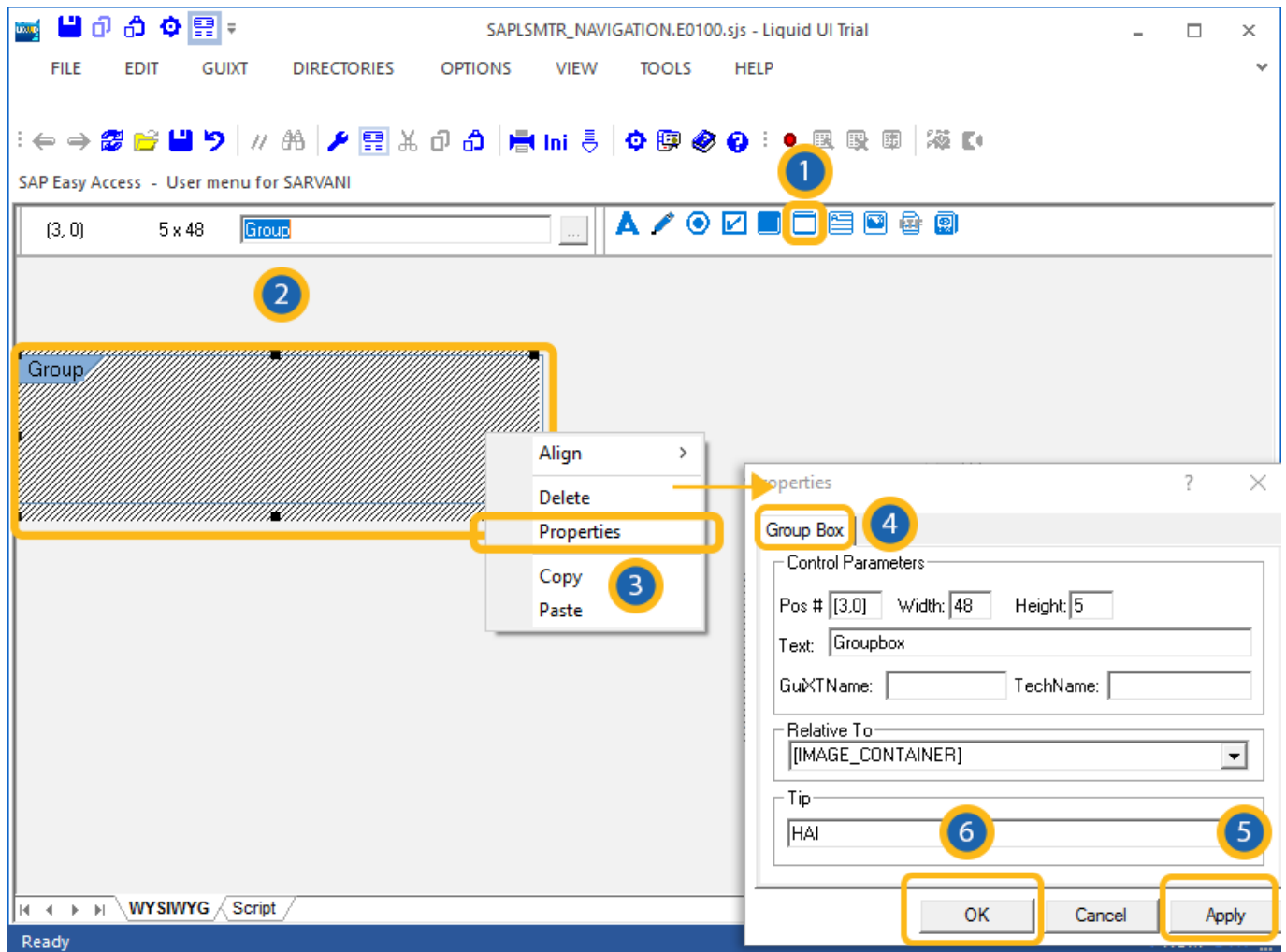
The properties dialog for the groupbox element contains a single tab, as follows:

- [Group Box](#)

You can modify the properties for the groupbox element from this dialog box. The tabs are more fully explained below.

Group Box

The Group Box tab appears as shown below.



The available parameters are as follows.

Designer Features

Pos

Specifies the groupbox's onscreen coordinates. This is a read-only field - it is not user-modifiable.

Width

Specifies the groupbox's width in pixels. This is a read-only field.

Height

Specifies the groupbox's height in pixels. This is a read-only field.

Text

Specifies the onscreen label for the groupbox.

GuiXTName

Specifies the GuiXT name of the groupbox.

Unique solution ID: #1522
Author: Shilpa Sahu
Last update: 2019-08-06 06:27